

I revised the battery tray of my 98 Safari Sahara M3044 to accommodate the two standard group 31 chassis batteries and change the coach batteries to GC2 golf cart 6 volt style.

Jim Exler, Nampa, ID

Original battery tray

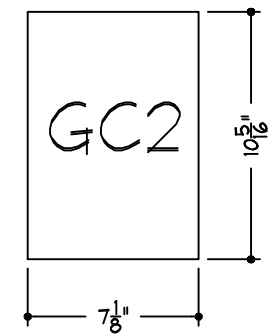
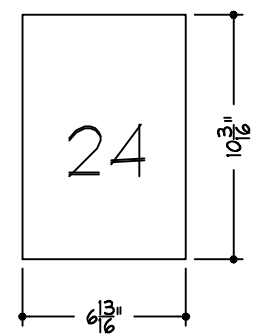
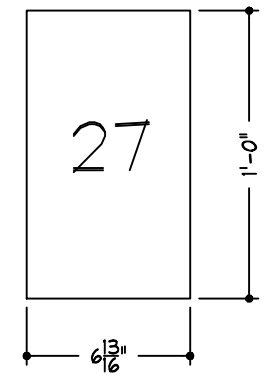
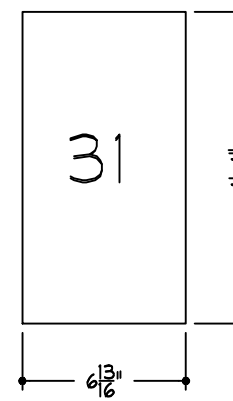
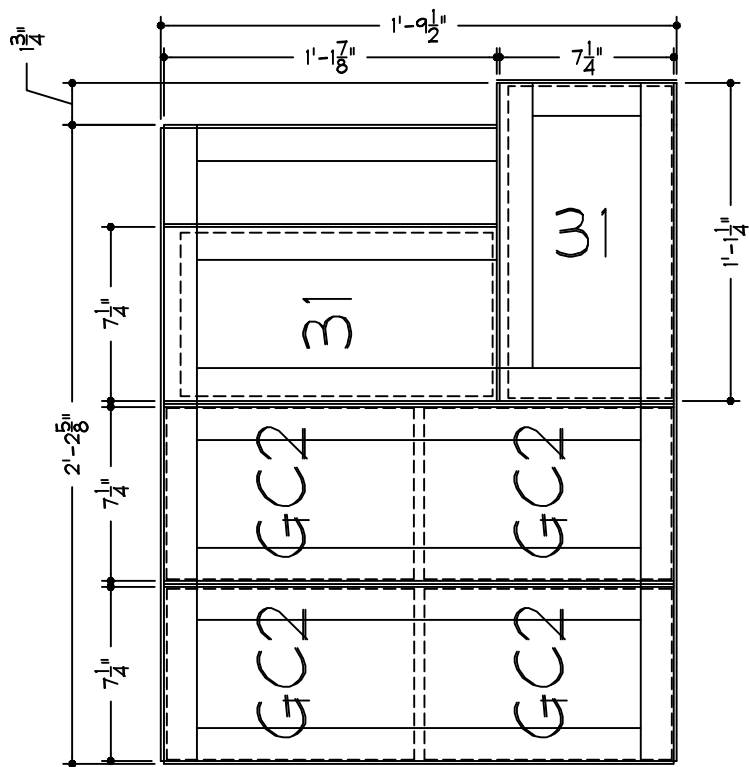


Revised tray showing extension with cables



Two views of the revised tray. Note the 1.75" extension at the far right.





NEW 4 GC2

THE REAR OF THE TRAY WAS EXTENDED 1.75" TO ALLOW GRP 31 BATTERIES TO FIT AS SHOWN. THIS PORTION FIT NEAR THE FRAME SPLICE PLATE. THE BATTERY CABLES FIT IN THE RECESS TO THE LEFT OF THIS. (SEE PICTURES)

MOST OF THE ANGLE USED WAS SALVAGED FROM THE ORIGINAL DIVIDERS. I REMOVED THE TRAY BY CUTTING THE STOP TAB ON THE ROLLER SLIDES AND CATCHING THE BALLS. UPON REASSEMBLY, I REPLACED THE STOPS WITH ALLEN HEAD SCREWS. THIS WAS THE FUN PART. I DIDN'T WANT TO WELD ON THE CHASSIS.

	SCALE: N/A	PROJECT: SAFARI MOTORHOME	TITLE: BATTERY TRAY MOD	
	DRAWN: JIM EXLER	LOC: CAMARILLO, CA	DRG: SAFARI 8	REVISION
	DATE: 10/27/10	JOB NO: N/A	Safari.dwg	0